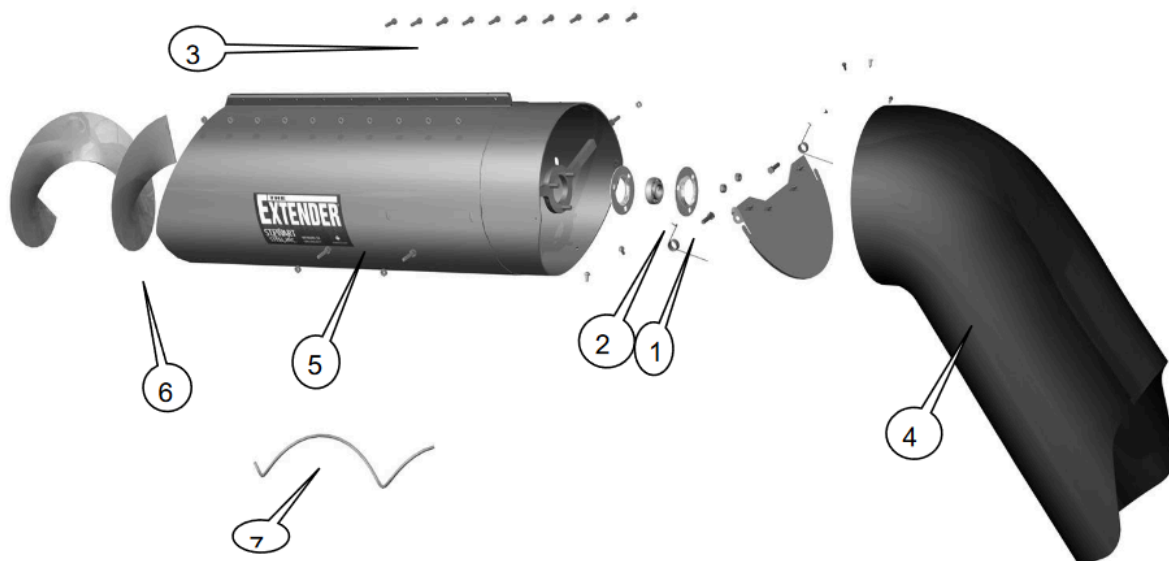




The JD-FT3
Extender



Installation Drawing for FT-3 Extender

1. Bearing AEL205-100D1 (1)
2. #52 Bearing flanges (2)
3. Bolt Package BPKFT3-13 (1)
4. #13 Spout New (1)
5. Main Sleeve Assembly (1)
6. Flighting EFJFT-LH25 (1)
7. Spiral rod (1)
8. Bolt Package BPK60SP-13 (1)
9. Clamp support Brackets (2)

WARRANTY: STEWART STEEL INC. WARRANTY COVERS ALL THE ABOVE PARTS FOR A PERIOD OF 1 YEAR FROM TIME OF PURCHASE. THE WARRANTY DOES NOT COVER ANY PARTS MADE AND SOLD BY THE ORIGINAL MANUFACTURER OR ANY PARTS THAT WERE PART OF THE ORIGINAL COMBINE CONSTRUCTION.

* EXTENDING AUGER OVER MANUFACTURERS RECOMMENDED MAXIMUM LENGTH IS DONE AT CUSTOMERS OWN RISK

*** NEVER LEAVE UNLOADING AUGER FULL UNLESS ABSOLUTELY NECESSARY!**

Installation Instructions:

1. Remove end cap, rubber spout, and bearing from unloading Auger.
CAUTION NOTE: When removing bearing do not pull out on auger as the auger may drop off the spline in the middle of the auger. This will result in having to put the auger back in place as well as re-timing the auger. On some John Deere combine models there is no inspection door and removing the entire auger may be necessary to do this. This whole procedure if not done correctly could add substantial extra time to the installation.
2. Slide on flighting to match up to existing flighting and stitch weld on. Cut flighting off flush with end of auger tube (3 1/2")(Figure 2) to allow flighting to turn past bearing flange when they are mounted to the bearing shaft (1" diameter shaft). This can be done by placing a straight edge across the end of the 3 1/2" tube and marking the flighting. Cut off the excess flighting.
NOTE: Where Shaft is only 3" diameter use 1/4" spiral rod as a spacer between flighting and shaft. If shaft is 3 1/2" diameter discard rod as it is not required.
3. Slide Extender tube in place . Mount 1 bolts (5/16 x 1-1/4 hex bolt & locknut) to left hand side matching up with existing slots on auger tube with bolt mounted from the inside out.(Figure 3)
4. Bolt top 8 bolts and tighten on top of sleeve using 5/16 x 1-1/4 hex bolts & locknuts.
5. Finally install and bolt to right side (slotted holes) and tighten (use 2 -5/16 x 1- 1/4" hex bolts & locknuts) again mounting the bolts from the inside out.

WARRANTY: STEWART STEEL INC. WARRANTY COVERS ALL THE ABOVE PARTS FOR A PERIOD OF 1 YEAR FROM TIME OF PURCHASE. THE WARRANTY DOES NOT COVER ANY PARTS MADE AND SOLD BY THE ORIGINAL MANUFACTURER OR ANY PARTS THAT WERE PART OF THE ORIGINAL COMBINE CONSTRUCTION.

* EXTENDING AUGER OVER MANUFACTURERS RECOMMENDED MAXIMUM LENGTH IS DONE AT CUSTOMERS OWN RISK

*** NEVER LEAVE UNLOADING AUGER FULL UNLESS ABSOLUTELY NECESSARY!**

6. Install bearing and flangettes to hanger bracket with bearing & flangettes to spout side of Extender outer tube sleeve. Use 5/16" Carriage bolts & locknuts.

7. Install spout by sliding over the end of the tube bottom first to tab stop(Figure 4). Line up seam on spout with seam on Extender tube(figure 5). Tap top tab stops down with hammer to hold spout in position.(Figure 6). Push bottom of spout out against grain saver door hinge and secure bottom tab with self drilling screw first. Install spout support clamp and tighten bolts. The put in self drilling screw on top to hold spout in place. Reach in from end with hooked rod and check that door moves freely. Add the rest of self drilling screws. It is critical for the operation of the Grain saver door that the spout and tube seams line up.

Note" If door binds on one side adjust by turning spout slightly before installing all screws.

Figure 2

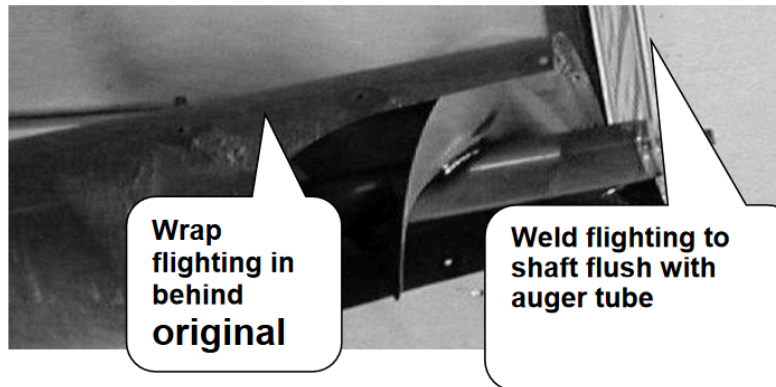
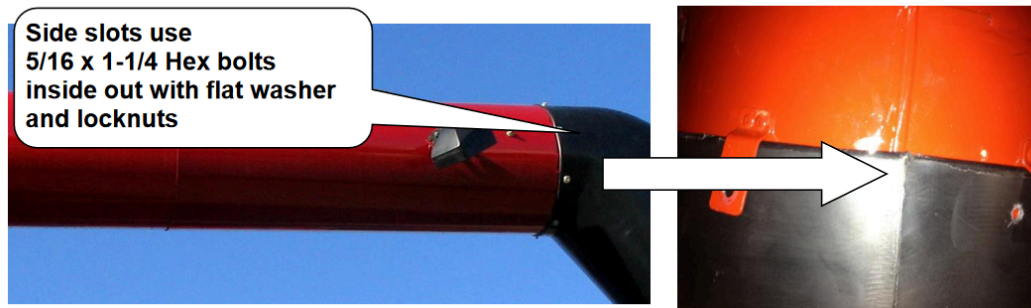


Figure 3

Figure 5

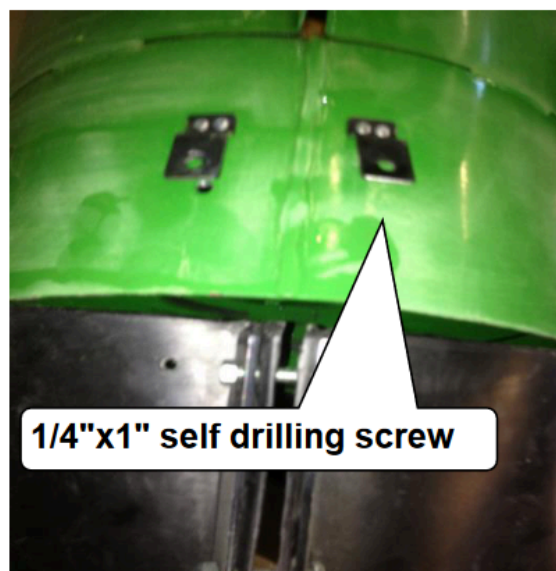


WARRANTY: STEWART STEEL INC. WARRANTY COVERS ALL THE ABOVE PARTS FOR A PERIOD OF 1 YEAR FROM TIME OF PURCHASE. THE WARRANTY DOES NOT COVER ANY PARTS MADE AND SOLD BY THE ORIGINAL MANUFACTURER OR ANY PARTS THAT WERE PART OF THE ORIGINAL COMBINE CONSTRUCTION.

* EXTENDING AUGER OVER MANUFACTURERS RECOMMENDED MAXIMUM LENGTH IS DONE AT CUSTOMERS OWN RISK

*** NEVER LEAVE UNLOADING AUGER FULL UNLESS ABSOLUTELY NECESSARY!**

JD-FT3

Figure 4

WARRANTY: STEWART STEEL INC. WARRANTY COVERS ALL THE ABOVE PARTS FOR A PERIOD OF 1 YEAR FROM TIME OF PURCHASE. THE WARRANTY DOES NOT COVER ANY PARTS MADE AND SOLD BY THE ORIGINAL MANUFACTURER OR ANY PARTS THAT WERE PART OF THE ORIGINAL COMBINE CONSTRUCTION.

* EXTENDING AUGER OVER MANUFACTURERS RECOMMENDED MAXIMUM LENGTH IS DONE AT CUSTOMERS OWN RISK

*** NEVER LEAVE UNLOADING AUGER FULL UNLESS ABSOLUTELY NECESSARY!**