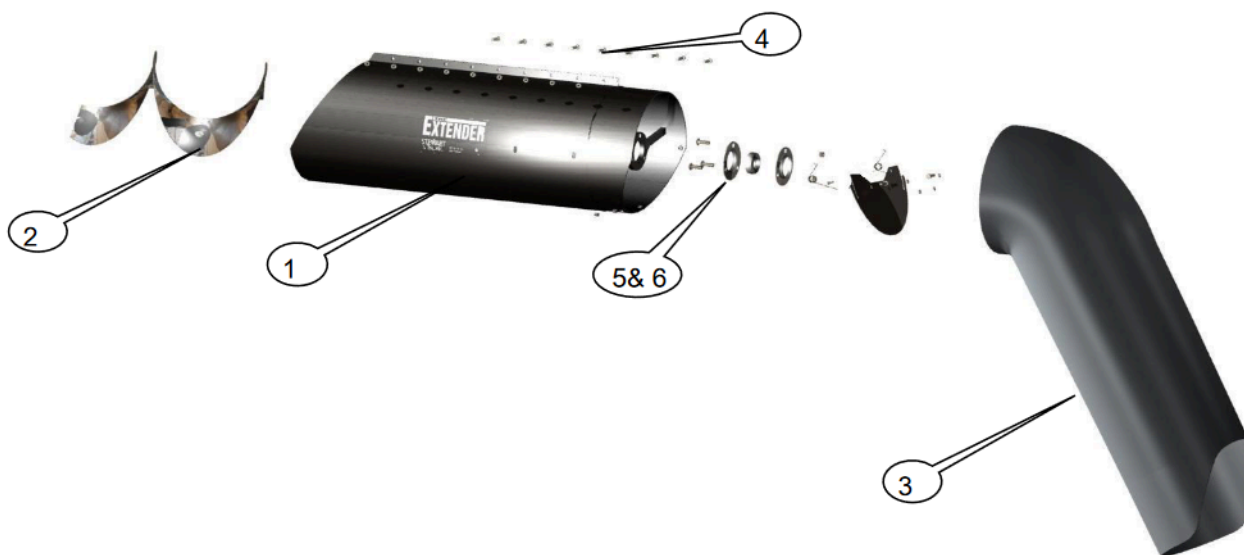




The EXT-CN-H-FT0708(R)  
Extender



*Parts list for EXT-CNHH-FT0708(R) Extender*

Description	Quantity
-------------	----------

- |                                     |     |
|-------------------------------------|-----|
| 1. Outer Tube/Clamp                 | (1) |
| 2. Flighting EFCFT-LH17             | (1) |
| 3. #14 Spout                        | (1) |
| 4. Bolt Package BPKFT3              | (1) |
| 5. Bearing (30mm) & collar AEL206D1 | (1) |
| 6. #62 Bearing flangettes           | (2) |

WARRANTY: STEWART STEEL INC. WARRANTY COVERS ALL THE ABOVE PARTS FOR A PERIOD OF 1 YEAR FROM TIME OF PURCHASE. THE WARRANTY DOES NOT COVER ANY PARTS MADE AND SOLD BY THE ORIGINAL MANUFACTURER OR ANY PARTS THAT WERE PART OF THE ORIGINAL COMBINE CONSTRUCTION.

\* EXTENDING AUGER OVER MANUFACTURERS RECOMMENDED MAXIMUM LENGTH IS DONE AT CUSTOMERS OWN RISK

**\* NEVER LEAVE UNLOADING AUGER FULL UNLESS ABSOLUTELY NECESSARY!**

## EXT-CNHH-FT0708(R)



COMBINE UNLOADING AUGER EXTENSION FOR: 2007  
-2008 Case 7010 & 8010 and New Holland 2007-2008 -  
CR940, CR960 & CR970

Installation Instructions:

1. Remove plastic spout, bearing and holder from factory unloading auger.
2. From the backside of the welded strap on combine side of the unloading auger, cut completely around the unloading auger just behind the welds that secure the tube strap. (See Figure 1)
3. Weld on flighting so flighting is continuous to the end of the 4-1/2 inch auger tube. If flighting is already welded on ignore this procedure.
4. Slide the new tube/clamp to the end of the unloading auger as far as possible. Install bolts and nuts loose.

Figure 1

Cut off tube just  
behind welds that  
secure strap



Figure 3



WARRANTY: STEWART STEEL INC. WARRANTY COVERS ALL THE ABOVE PARTS FOR A PERIOD OF 1 YEAR FROM TIME OF PURCHASE. THE WARRANTY DOES NOT COVER ANY PARTS MADE AND SOLD BY THE ORIGINAL MANUFACTURER OR ANY PARTS THAT WERE PART OF THE ORIGINAL COMBINE CONSTRUCTION.

\* EXTENDING AUGER OVER MANUFACTURERS RECOMMENDED MAXIMUM LENGTH IS DONE AT CUSTOMERS OWN RISK

**\* NEVER LEAVE UNLOADING AUGER FULL UNLESS ABSOLUTELY NECESSARY!**

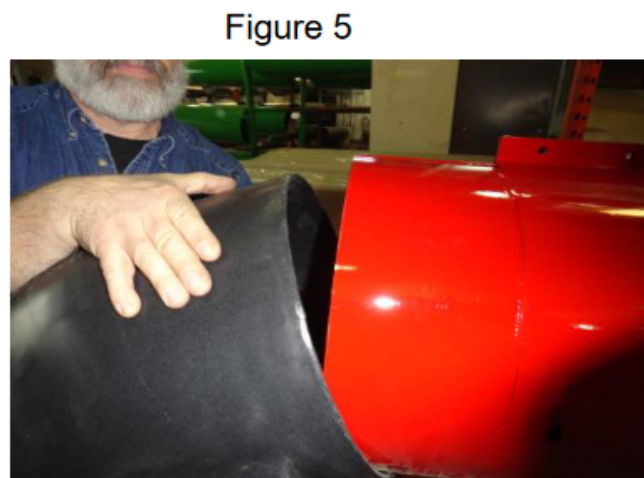
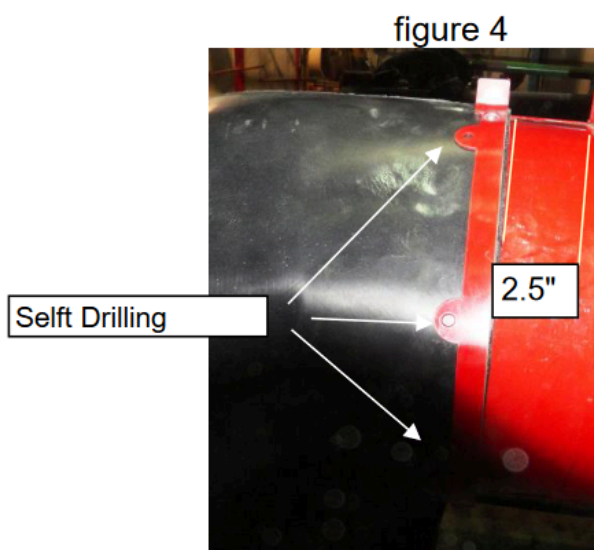
## EXT-CN-H-FT0708(R)



5. Install bearing in hanger in the proper position on the auger. Move in or out to align the bearing in the proper spot. Tighten bolts on tube clamp and bearing flanges.

6. Install spout by sliding over the end of the tube bottom first. Prying top over top edge) (Figure 5) approx. 2-1/2 inches. (Figure 4) line up seam on spout with seam on Extender tube (Figure 3) and secure spout with cinch strap and self drilling screws (Figure 4).

NOTE: It is critical for the operation of the Grain saver door that the spout and tube seams line up and that the spout is pushed out tight against the bottom hinge. When spout install is complete. Reach in from discharge end with a hooked rod and pull on door to ensure it is working freely.



WARRANTY: STEWART STEEL INC. WARRANTY COVERS ALL THE ABOVE PARTS FOR A PERIOD OF 1 YEAR FROM TIME OF PURCHASE. THE WARRANTY DOES NOT COVER ANY PARTS MADE AND SOLD BY THE ORIGINAL MANUFACTURER OR ANY PARTS THAT WERE PART OF THE ORIGINAL COMBINE CONSTRUCTION.

\* EXTENDING AUGER OVER MANUFACTURERS RECOMMENDED MAXIMUM LENGTH IS DONE AT CUSTOMERS OWN RISK

**\* NEVER LEAVE UNLOADING AUGER FULL UNLESS ABSOLUTELY NECESSARY!**