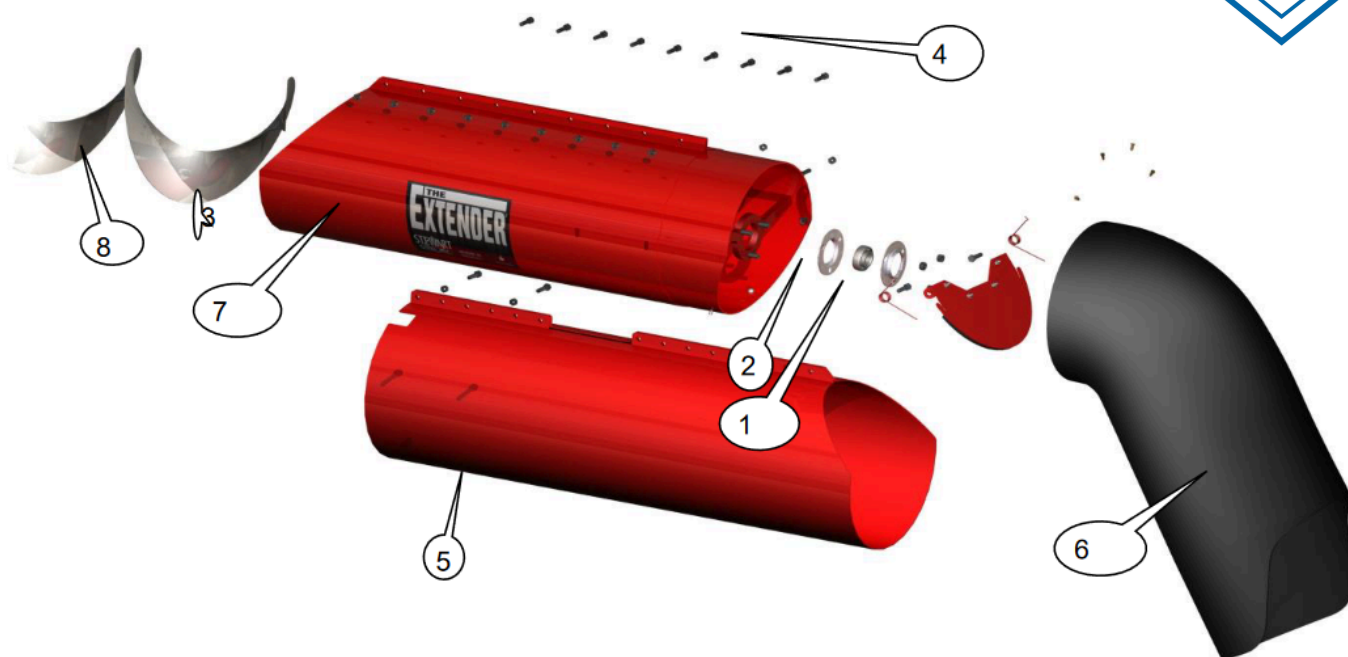




Case FT-3
Extender

Case FT-3



Installation Drawing for FT-3 Extender

Parts list for FT 3 Extender

Hardware Kit Contains Items 1 to 4 (in sealed poly bag)

1. Bearing & collar AEL205-100D1 (1)
2. #52 Bearing flangettes (2)
3. Bolt Package BPKFT3 (1)
4. Bolt Package BPKSSS (1)
5. Saddle support sleeve (1)
6. #12 Spout (1)
7. Main sleeve Assembly w/GSD, Springs, & 2 Bolts (1)
8. Case Flighting EFCFT-RH25 (1)

WARRANTY: STEWART STEEL INC. WARRANTY COVERS ALL THE ABOVE PARTS FOR A PERIOD OF 1 YEAR FROM TIME OF PURCHASE. THE WARRANTY DOES NOT COVER ANY PARTS MADE AND SOLD BY THE ORIGINAL MANUFACTURER OR ANY PARTS THAT WERE PART OF THE ORIGINAL COMBINE CONSTRUCTION.

* EXTENDING AUGER OVER MANUFACTURERS RECOMMENDED MAXIMUM LENGTH IS DONE AT CUSTOMERS OWN RISK

*** NEVER LEAVE UNLOADING AUGER FULL UNLESS ABSOLUTELY NECESSARY!**

Case FT-3 For Case Models 1440 - 2588



1. Remove end cap, rubber spout, and bearing from unloading Auger.
CAUTION NOTE: When removing bearing do not pull out on auger as the auger may drop off the spline in the middle of the auger. This will result in having to put the auger back in place as well as re-timing the auger. On some Case combine models there is no inspection door and removing the entire auger may be necessary to do this. This whole procedure if not done correctly could add substantial extra time to the installation.
2. Slide on flighting to match up to existing flighting and stitch weld on. Cut flighting off flush with end of auger tube (3")(Figure 2) to allow flighting to turn past bearing flange when they are mounted to the bearing shaft (1" diameter shaft). This can be done by placing a straight edge across the end of the 3" tube and marking the flighting. Cut off the excess flighting
3. Slide Extender tube in place. Mount 1 bolt (5/16 x 1-1/4 hex bolt & locknut) to left hand side matching up with existing slots on auger tube with bolt mounted from the inside out.(Figure 3)
4. Bolt top 8 bolts and tighten on top of sleeve using 5/16 x 1-1/4 hex bolts & locknuts.
5. Install and bolt to right side (slotted holes) and tighten (use 2 -5/16 x 1-1/4" hex bolts & locknuts) again mounting the bolts from the inside out.

WARRANTY: STEWART STEEL INC. WARRANTY COVERS ALL THE ABOVE PARTS FOR A PERIOD OF 1 YEAR FROM TIME OF PURCHASE. THE WARRANTY DOES NOT COVER ANY PARTS MADE AND SOLD BY THE ORIGINAL MANUFACTURER OR ANY PARTS THAT WERE PART OF THE ORIGINAL COMBINE CONSTRUCTION.

* EXTENDING AUGER OVER MANUFACTURERS RECOMMENDED MAXIMUM LENGTH IS DONE AT CUSTOMERS OWN RISK

*** NEVER LEAVE UNLOADING AUGER FULL UNLESS ABSOLUTELY NECESSARY!**

Case FT-3



6. Install bearing and flangettes to hanger bracket with bearing & flangettes to spout side of Extender outer tube sleeve. Use 5/16" Carriage bolts & locknuts.

7. Mount Spout to end of Extender outer tube sleeve by putting on straight over end of tube approx 2"(Figure 4) When the spout lines up over the tube (figure 5) put 8 self drilling screws with flat washers(Figure 6) through the spout into the extender sleeve to hold the spout on.(Figure5)

Figure 2

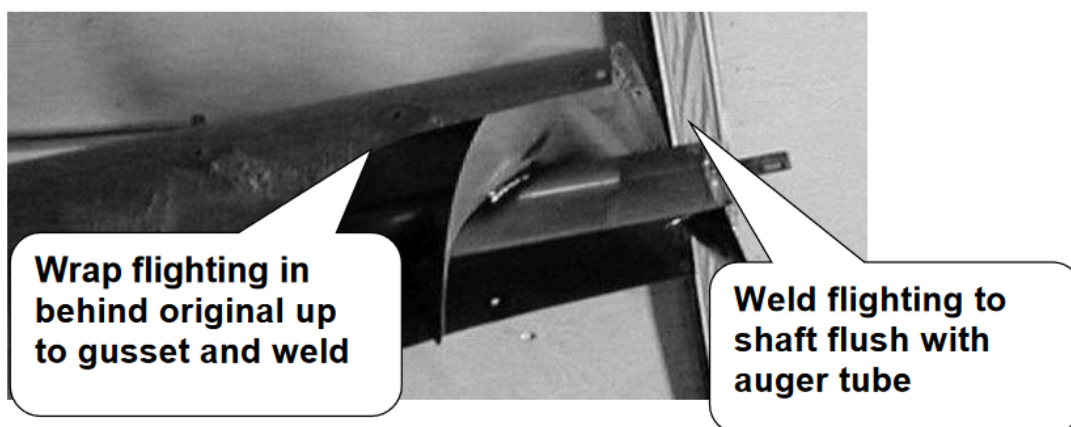
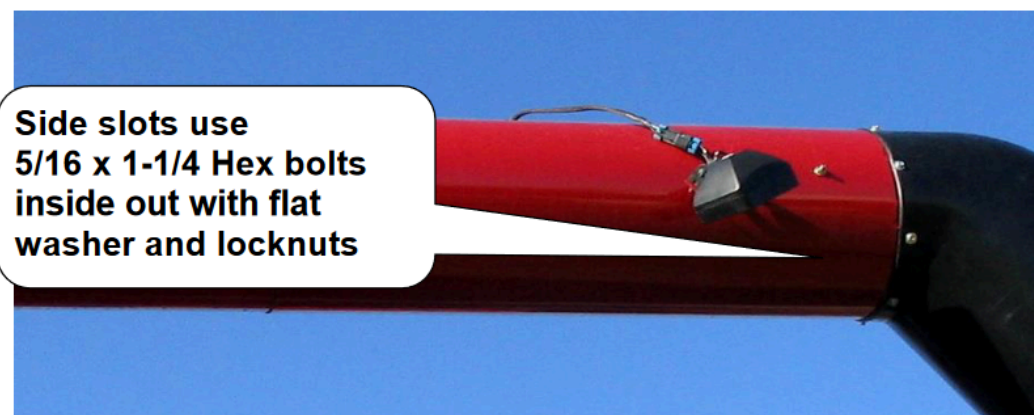


Figure 3



WARRANTY: STEWART STEEL INC. WARRANTY COVERS ALL THE ABOVE PARTS FOR A PERIOD OF 1 YEAR FROM TIME OF PURCHASE. THE WARRANTY DOES NOT COVER ANY PARTS MADE AND SOLD BY THE ORIGINAL MANUFACTURER OR ANY PARTS THAT WERE PART OF THE ORIGINAL COMBINE CONSTRUCTION.

* EXTENDING AUGER OVER MANUFACTURERS RECOMMENDED MAXIMUM LENGTH IS DONE AT CUSTOMERS OWN RISK

*** NEVER LEAVE UNLOADING AUGER FULL UNLESS ABSOLUTELY NECESSARY!**

Case FT-3



NOTE: It may be necessary to heat plastic spout (hot to the touch) with small torch or heat gun in order to put on spout as spouts are tight. Start by putting on spout from bottom up to clear grain saver door. Spout should go on far enough so door works properly inside

Figure 4

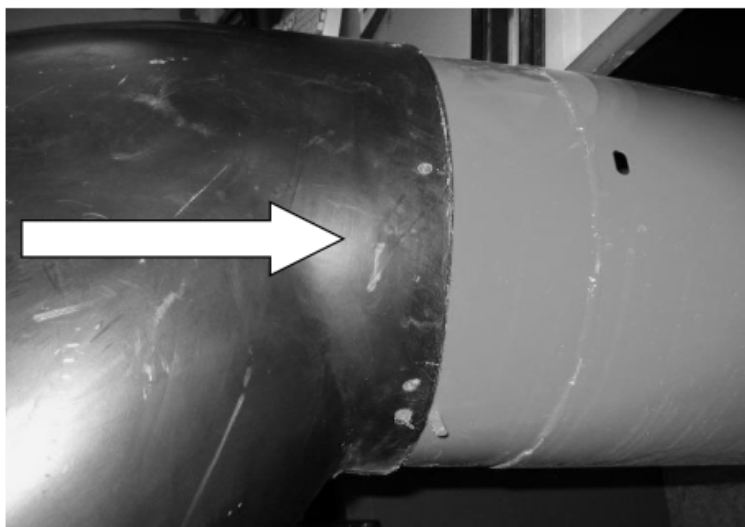


Figure 5



location of 8 self drilling screws

WARRANTY: STEWART STEEL INC. WARRANTY COVERS ALL THE ABOVE PARTS FOR A PERIOD OF 1 YEAR FROM TIME OF PURCHASE. THE WARRANTY DOES NOT COVER ANY PARTS MADE AND SOLD BY THE ORIGINAL MANUFACTURER OR ANY PARTS THAT WERE PART OF THE ORIGINAL COMBINE CONSTRUCTION.

* EXTENDING AUGER OVER MANUFACTURERS RECOMMENDED MAXIMUM LENGTH IS DONE AT CUSTOMERS OWN RISK

*** NEVER LEAVE UNLOADING AUGER FULL UNLESS ABSOLUTELY NECESSARY!**

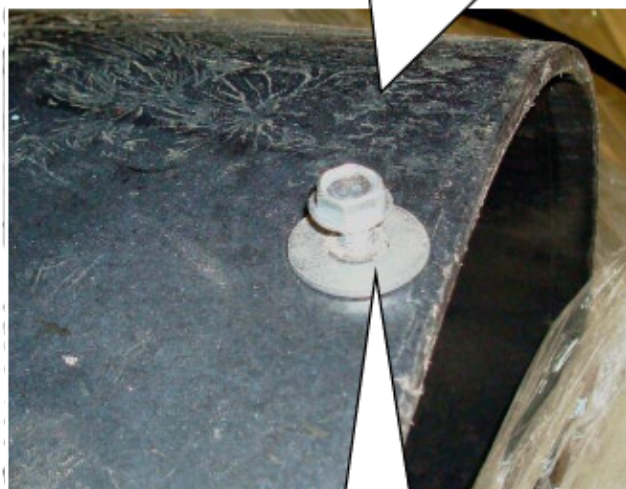
Case FT-3



NOTE: It may be necessary to heat plastic spout (hot to the touch) with small torch or heat gun in order to put on spout as spouts are tight. Start by putting on spout from bottom up to clear grain saver door. Spout should go on far enough so door works properly inside

Figure 6

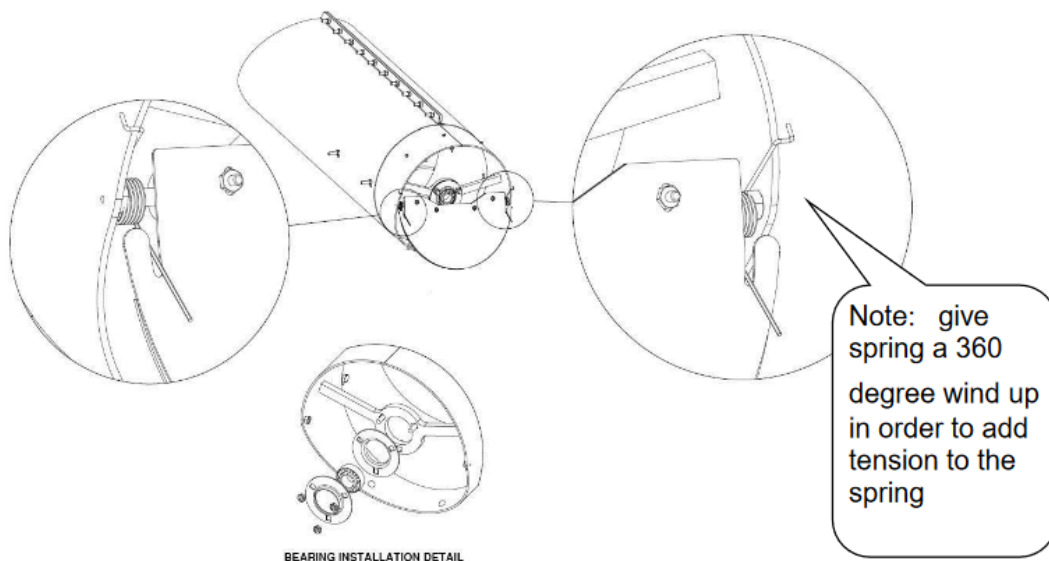
1/4"x1" self drilling screw



5/16" Flat washer

Grain Saver Door Set Up

Figure 7



BEARING INSTALLATION DETAIL

*** NEVER LEAVE UNLOADING AUGER FULL UNLESS ABSOLUTELY NECESSARY!**

Case FT-3



6. Mount saddle support sleeve as shown below. Remove existing small bracket first, mount new sleeve and then replace original bracket over top of new sleeve. This will substantially improve the strength and durability of the original tube



WARRANTY: STEWART STEEL INC. WARRANTY COVERS ALL THE ABOVE PARTS FOR A PERIOD OF 1 YEAR FROM TIME OF PURCHASE. THE WARRANTY DOES NOT COVER ANY PARTS MADE AND SOLD BY THE ORIGINAL MANUFACTURER OR ANY PARTS THAT WERE PART OF THE ORIGINAL COMBINE CONSTRUCTION.

* EXTENDING AUGER OVER MANUFACTURERS RECOMMENDED MAXIMUM LENGTH IS DONE AT CUSTOMERS OWN RISK

*** NEVER LEAVE UNLOADING AUGER FULL UNLESS ABSOLUTELY NECESSARY!**