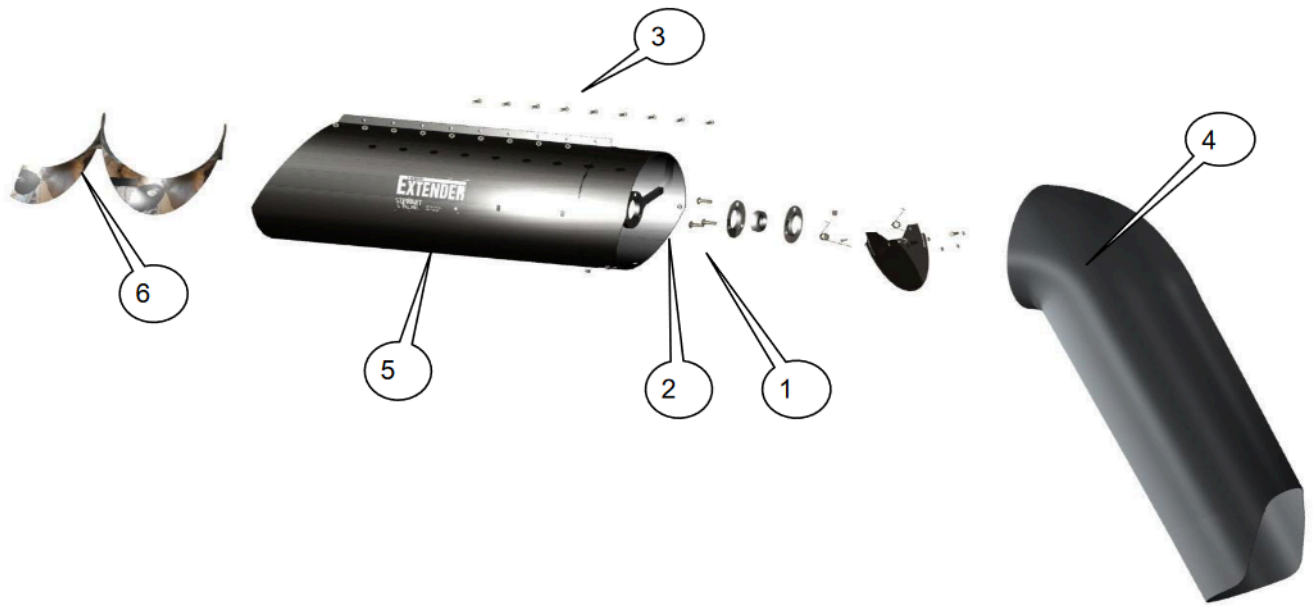




The CNH-FT3B
Extender



**Installation Drawing for FT-3 Extender
Hardware Kit Contains Items 1 to 3 (in sealed
poly bag)**

1. Bearing (30mm) & collar (1)
2. #62 Bearing flangettes (2)
3. Bolt Package BPKFT3 (1)
4. #14 - 2012- Spout (1)
5. Main Sleeve Assembly (1)
6. Flighting EFCFT-LH32 (1)

AEL206D1



CNH-FT-3B
For Case & New Holland Models
Case Combines for Models 7010 & 8010 to 2006 & 6088 to
9230 models 2009 newer and New
Holland CR & CX combines 2009 & Newer
New Holland Combines for Models CR960 & CR970 CX 960 &
CX970 to 2006

Installation Instructions:

1. Remove end cap, rubber spout, and bearing from unloading Auger.

CAUTION NOTE: When removing bearing do not pull out on auger as the auger may drop off the spline in the middle of the auger. This will result in having to put the auger back in place as well as re-timing the auger. On some Case combine models there is no inspection door and removing the entire auger may be necessary to do this. This whole procedure if not done correctly could add substantial extra time to the installation.

2. Slide on flighting to match up to existing flighting and stitch weld on. Cut flighting off flush with end of auger tube (4 1/2")(Figure 2) to allow flighting to turn past bearing flange when they are mounted to the bearing shaft (30mm" diameter shaft). This can be done by placing a straight edge across the end of the 4 1/2" tube and marking the flighting .Cut off the excess flighting.

3. Slide Extender tube in place mounting 1 bolt (5/16 x 1-1/4 hex bolt & locknut) to left hand side matching up with existing slots on auger tube with bolt mounted from the inside out.(Figure 3)

4. Bolt top 8 bolts and tighten on top of sleeve using 5/16 x 1-1/4 hex bolts & locknuts

WARRANTY: STEWART STEEL INC. WARRANTY COVERS ALL THE ABOVE PARTS FOR A PERIOD OF 1 YEAR FROM TIME OF PURCHASE. THE WARRANTY DOES NOT COVER ANY PARTS MADE AND SOLD BY THE ORIGINAL MANUFACTURER OR ANY PARTS THAT WERE PART OF THE ORIGINAL COMBINE CONSTRUCTION.

* EXTENDING AUGER OVER MANUFACTURERS RECOMMENDED MAXIMUM LENGTH IS DONE AT CUSTOMERS OWN RISK

*** NEVER LEAVE UNLOADING AUGER FULL UNLESS ABSOLUTELY NECESSARY!**

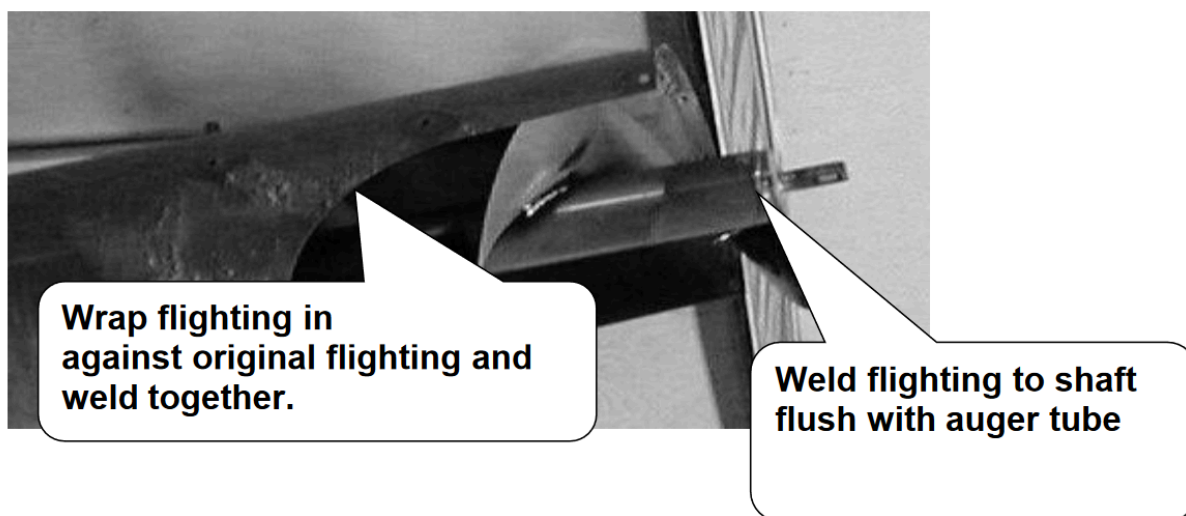
CNH-FT-3B

5. Install bolt to right side (slotted holes) and tighten (use 2 -5/16 x 1-1/4" hex bolts & locknuts) again mounting the bolts from the inside out.

6. Install bearing in hanger in the proper position on the auger shaft. Move in or out to align the bearing in the proper spot. Tighten bolts on tube clamp and bearing flanges.

7. Install spout by sliding over the end of the tube bottom first to tab stop (Figure . Line up seam on spout with seam on Extender tube (figure 5). Tap top tab stops down with hammer to hold spout in position. (Figure 6). Push bottom of spout out against grain saver door hinge and secure bottom tab with self drilling screw first. Then put in self drilling screw on top to hold spout in place. Add the rest of self drilling screws. Reach in from end with hooked rod and check that door moves freely. It is critical for the operation of the Grain saver door that the spout and tube seams line up. If door binds on one side adjust by turning spout slightly.

figure 2



WARRANTY: STEWART STEEL INC. WARRANTY COVERS ALL THE ABOVE PARTS FOR A PERIOD OF 1 YEAR FROM TIME OF PURCHASE. THE WARRANTY DOES NOT COVER ANY PARTS MADE AND SOLD BY THE ORIGINAL MANUFACTURER OR ANY PARTS THAT WERE PART OF THE ORIGINAL COMBINE CONSTRUCTION.

* EXTENDING AUGER OVER MANUFACTURERS RECOMMENDED MAXIMUM LENGTH IS DONE AT CUSTOMERS OWN RISK

*** NEVER LEAVE UNLOADING AUGER FULL UNLESS ABSOLUTELY NECESSARY!**

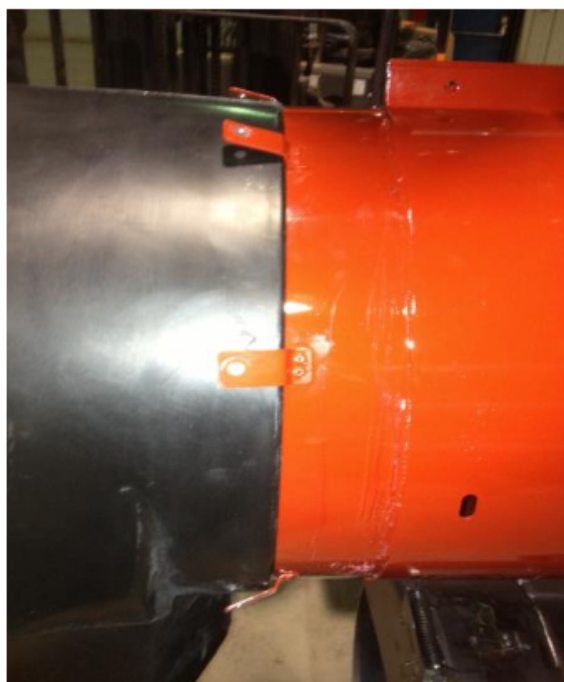
Figure 4



Figure 5



Figure 6



WARRANTY: STEWART STEEL INC. WARRANTY COVERS ALL THE ABOVE PARTS FOR A PERIOD OF 1 YEAR FROM TIME OF PURCHASE. THE WARRANTY DOES NOT COVER ANY PARTS MADE AND SOLD BY THE ORIGINAL MANUFACTURER OR ANY PARTS THAT WERE PART OF THE ORIGINAL COMBINE CONSTRUCTION.

* EXTENDING AUGER OVER MANUFACTURERS RECOMMENDED MAXIMUM LENGTH IS DONE AT CUSTOMERS OWN RISK

*** NEVER LEAVE UNLOADING AUGER FULL UNLESS ABSOLUTELY NECESSARY!**